

21445

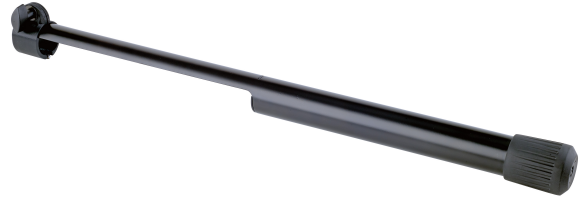
Leveling leg for speaker stand

Product variant

21445-000-55 - black

Data

Diameter	40 mm
EAN	4016842829194
Height	647 mm
Material	steel
Special features	with the help of this adapter you can easily balance out uneven surfaces, stairs, steps or sloped surfaces; allows a height adjustment of max. 200 mm; if the surface is even, you simply leave the adapter in the initial position on the speaker foot
Suitable for tubing diameter of	35 mm
Type	black
Weight	0.668 kg



Adapt your speaker stand to the respective stage, studio or rehearsal room using this leveling leg - a useful supplement for the following König & Meyer speaker stands: 21300-009-55, 21302-009-55, 21435-009-55, 21436-009-55, 21460-009-55, 21460-009-76, 21460-009-81, 21463-000-55, 21467-000-55, 24630-009-55, 21471-000-55 and 21472-000-55. With the help of this adapter you can easily level uneven surfaces, stairs, steps or sloped surfaces. The leveling leg is attached to one of the speaker feet and set using a clamping bracket. The required leveling length is variable and allows a height adjustment of max. 200 mm. If the surface is even, you simply leave the adapter in the initial position on the speaker foot.